

If you have questions regarding Coronavirus/COVID-19 please call 1-833-4-ASK-ODH (1-833-427-5634)



Re



Re



Re



Re



Re



Re





Re



Re



Re



Re



704

Confirmed Cases in Ohio *

75

Number of ICU admissions

182

Number of Hospitalizations in Ohio

10

Number of Deaths **

<1-94

Age Range

51

Median Age

520%

55 70

Sex - Males

47%

Sex - Females

Last Updated: 03/25/20 (Updated daily at 2 p.m.)

* Number of counties with cases: 55 – Ashland (1), Ashtabula (3), Belmont (3), Butler (18), Carroll (3), Champaign (1), Clark (2), Clermont (5), Clinton (2), Columbiana (4), Coshocton (4), Crawford (1), Cuyahoga (206), Darke (1), Defiance (2), Delaware (12), Erie (2), Fairfield (5), Fayette (1), Franklin (88), Gallia (1), Geauga (4), Greene (3), Hamilton (48), Hancock (1), Highland (1), Huron (2), Knox (2), Lake (14), Lawrence (1), Licking (3), Logan (2), Lorain (37), Lucas (23), Madison (2), Mahoning (42), Marion (4), Medina (22), Mercer (1), Miami (19), Montgomery (14), Pickaway (1), Portage (4), Richland (4), Sandusky (1), Seneca (1), Stark (12), Summit (43), Trumbull (9), Tuscarawas (3), Union (3), Warren (8), Washington (1), Wayne (1), Wood (3)

** Number of deaths: 10 – Cuyahoga (2), Erie (1), Franklin (2), Gallia (1), Lucas (1), Miami (1), Stark (2)

[Tweets by OHdeptofhealth](#)

Latest Developments

- [Slides from 3/25 Press Conference](#)
- [Director's Order to Close Facilities Providing Child Care Services](#)
- [Governor DeWine Orders Hiring Freeze for State Agencies, Boards, and Commissions](#)
- [Stay At Home Order Frequently Asked](#)

[\(Versión en español\)](#)

-
- [Questions](#) [\(Versión en español\)](#)
[Ohio Issues "Stay at Home" Order; New Restrictions Placed on Day Cares for](#)
 - [Children](#) [\(Versión en español\)](#)
[Director's Order to Stay at](#)
 - [Home](#)
[Day Support for Developmentally Disabled to Close; BWC Payments Deferred; Trucking Waiver](#)
 - [Issued](#) [\(Versión en español\)](#)
-

- [Public Health Orders](#)
[Donate Blood - American Red](#)
 - [Cross](#)
[BMV](#)
 - [Closures](#)
 - [Find your local Health District](#)
-

Top Resources



Stay at Home Information

Information on how the Stay at Home Order impacts Ohioans.



Resources for Parents and Families

Answers about where parents can find help and activity ideas for their children during the COVID-19 epidemic.



How You Can Respond

Checklists for How You Can Respond to COVID-19



COVID-19 Checklists

Checklists to help you protect against COVID-19.

Educational Information

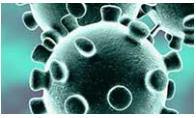


News Releases & News You Can Use
News Releases & News You Can Use related to coronavirus disease 2019 (COVID-19).

March 25, 2020



Resources for Local Health Districts, Local Governments, and Providers
COVID-19 Resources for Local Health Districts and Providers.

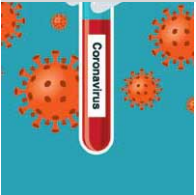


March 25, 2020



Resources for Economic Support
Find local, state and federal resources for individuals, businesses and organizations, health departments and local governments.

March 25, 2020



Frequently Asked Questions
What you need to know about COVID-19 and your risk.

March 24, 2020



How You Can Prevent and Prepare
Links and information on how to take action and prepare for COVID-19.

March 19, 2020



Educational Videos
Educational videos about coronavirus disease 2019 (COVID-19).

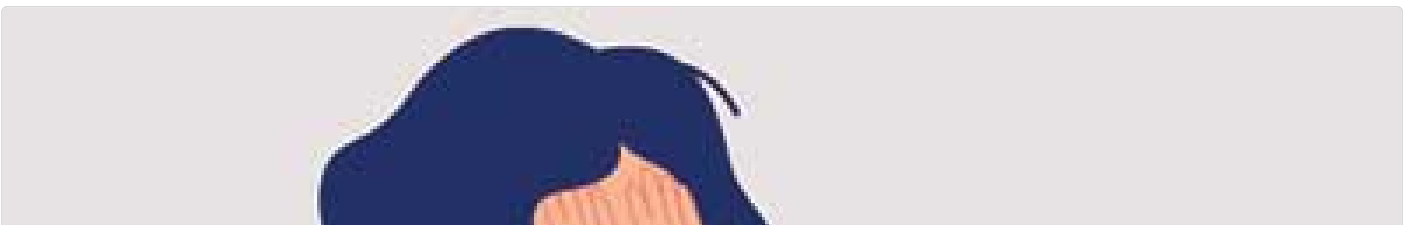
March 18, 2020

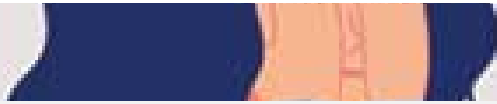
Additional Resources



Public Health Orders

Read the public health and executive orders signed by the governor and health director in response to COVID-19.





Coping with COVID-19 Anxiety

Resources to help you deal with the stress and mental toll of the COVID-19 outbreak.



Guidelines for Education and Childcare

The Ohio Department of Health shares guidelines to protect against COVID-19 in childcare and educational settings.



COVID-19 and Community Spread

Public health experts have estimated up to 1% of the population could be infected after identifying multiple cases of community spread of coronavirus.

Official site of **Ohio.gov**

Need help or information?

[Contact Us](#)